



# PRODUCTS



**millpar**

moulding company



## Our experience in wood processing enables us to customize products to meet your specific needs.

Millpar is one of the largest global players in manufacturing high end softwood products. A Brazilian family-owned business that is among the major Millwork producers to furniture and housing industries.

- You can identify most of our products by the 3 wavy stripes on the back.



- We are well known for meeting requested standards & specifications, profile matching, and on-time delivery in every market we attend.
- Our product is shipped in full 40' containers which are loaded at our docks, and packed with special care to resist the long journey. We can sell FOB Brazil, CFR or CIF port of arrival, and delivered to final destination, as well as arrange customs clearance.
- Packaging: for DIY stores we can offer products with barcode labels applied, i2of5 on bundles, contractor packs and shrink wrapped kits. Millpar can customize packaging according to your label and branding needs, making it easier for you to distribute the products on retail stores.



The mark of responsible forestry

Associations:



Millpar is associated to the Moulding & Millwork Producers Association and can run any product from WM/Series Patterns Catalog.



World Millwork Alliance provides its members with networking forums and advocacy, serving as a conduit for educational and informational resources for the millwork industry. Millpar is a regular exhibitor at WMA Annual Convention & Tradeshow

# Finger-jointed blanks

Planed and end-jointed wood in the finger-jointed system, used as raw material for the moulding, door and furniture industries. By using finger-jointed technology the wood pieces present better stability and are free from defects such as knots, blue stain, resin pockets and cracks. Products are available in Taeda Pine.

**FJ Blanks**



**Edge glued blanks**



**Squares and beams**



**Cutstocks**



**Rough Sawn Lumber**



**S2S Lumber**



## Standard Sizes

### Pine FJ Blanks

- Four sides are rough from FJ process
- Finger joint on sides

| Thickness | Width       |
|-----------|-------------|
| 20mm      | 74 to 124mm |
| 34mm      |             |
| 42mm      |             |

### Pine FJ Edge Glued Blanks

- Face and back are rough from FJ process
- Finger joint on sides of panel
- No sanding after glue press

| Thickness |
|-----------|
| 20mm      |
| 34mm      |
| 42mm      |

### Pine FJ Face Glued Blanks

- Face and back are planed after FJ process
- Finger joint on face of panel
- No sanding after glue press

| Thickness  |
|------------|
| 46 to 72mm |

# Mouldings

---

Millpar offers an impressive range of decorative mouldings for housing industry, attending both residential and commercial uses.



**We customize solutions to meet your specific needs.**

Millpar offers more than 5.000 knives already used to customize and shape mouldings. Each moulding is designed on CAD software to fit on standard blank sizes getting the most yield out of the raw material. Each run of moulding is checked per templates and verified its finishing aspects as texture, knife marks, finger joints, among others.

### Crowns | Beds | Covets



### Casings | Brick mould



### Chair rails



### Base mouldings | Base caps



#### Products available in:

Raw Finger  
Jointed



Primed

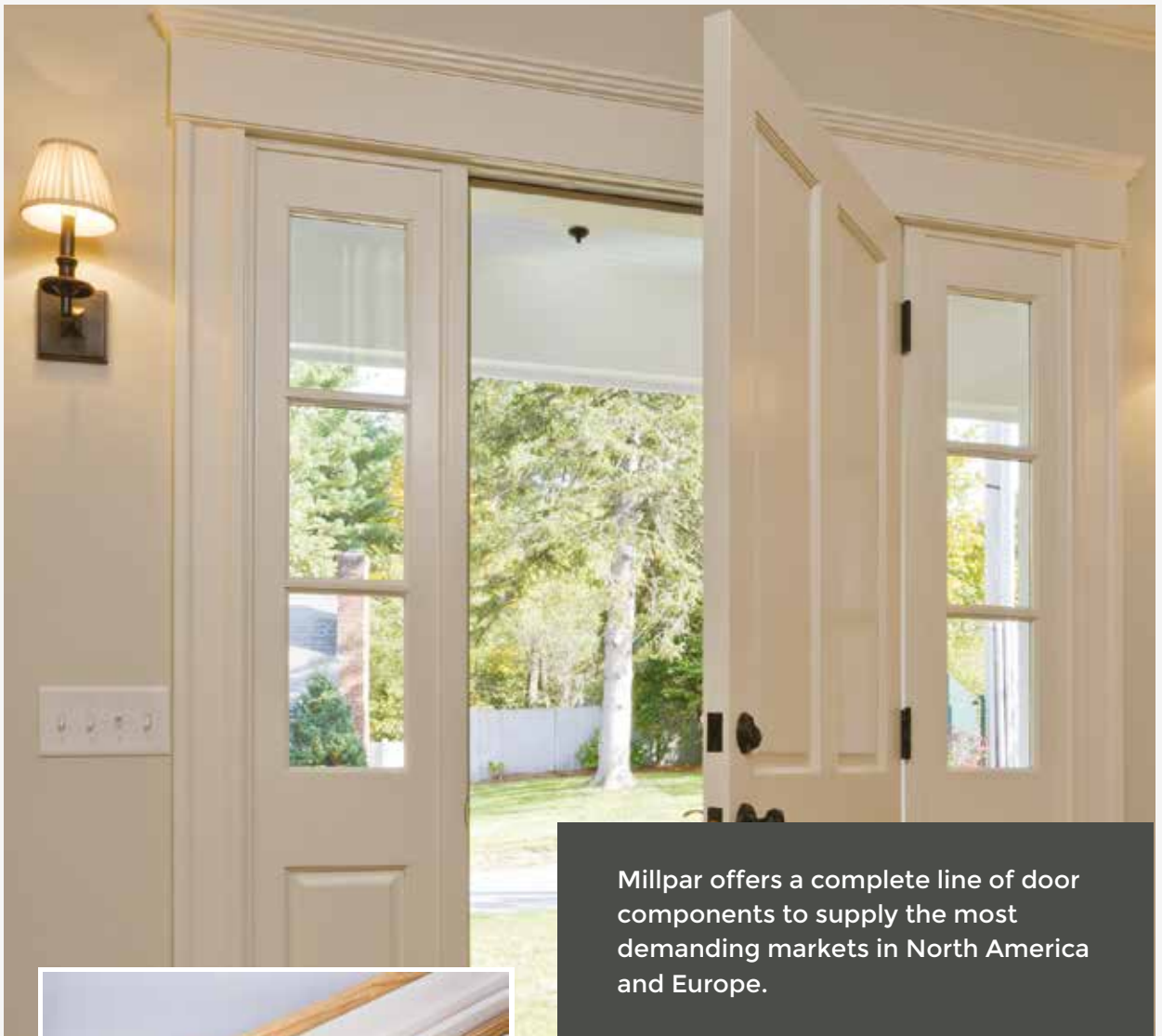


Millpar also offers stretcher bars and picture frame mouldings developed to attend the picture frame industry.

Our product is supplied raw and used by moulding manufacturers in their decoration lines.

# Door components

Millpar supplies components for door manufacturers, distributors and door shops with high volume demand.



Millpar offers a complete line of door components to supply the most demanding markets in North America and Europe.



## Products available in:

Raw Finger  
Jointed



Primed



## Exterior door jambs



### Standard sizes

| Thickness (in) | Width (in) | Length (ft) | Pairs per unit |
|----------------|------------|-------------|----------------|
| 1-1/4          | 4 - 5/8    | 6/8 and 8/0 | 112            |
| 1-1/4          | 4 - 3/4    | 6/8 and 8/0 | 112            |
| 1-1/4          | 4 - 7/8    | 6/8 and 8/0 | 112            |
| 1-1/4          | 5 - 1/4    | 6/8 and 8/0 | 98             |
| 1-1/4          | 6 - 5/8    | 6/8 and 8/0 | 84             |

Top and sill dado. Kerfed for weatherstrip.  
We can offer frames with weatherstrip seals applied.

## Flat jambs



### Standard sizes

| Thickness (in) | Width (in) | Length (ft) | Pairs per unit |
|----------------|------------|-------------|----------------|
| 9/16           | 4 - 5/8    | 6/8 and 8/0 | 225            |
| 11/16          | 3 - 5/8    | 6/8 and 8/0 | 220            |
| 11/16          | 3 - 7/8    | 6/8 and 8/0 | 220            |
| 11/16          | 4 - 5/8    | 6/8 and 8/0 | 180            |
| 11/16          | 4 - 7/8    | 6/8 and 8/0 | 160            |
| 11/16          | 5 - 1/4    | 6/8 and 8/0 | 140            |
| 11/16          | 6 - 5/8    | 6/8 and 8/0 | 120            |

## Split jambs



### Standard sizes

| Split Jambs assembled |            |         | Male Sizes |               | Female Sizes     |        | Pairs p/ unit |
|-----------------------|------------|---------|------------|---------------|------------------|--------|---------------|
| Thickness (in)        | Width (in) |         | T (in)     | W (in)        | T (in)           | W (in) |               |
|                       | min.       | max.    |            |               |                  |        |               |
| 1 - 1/16              | 4 - 1/4    | 5       | 6/8        | 11/16 2 - 1/2 | 1 - 1/16 2 - 3/4 | 153    |               |
| 1 - 1/16              | 4 - 3/8    | 5 - 1/8 | 6/8        | 11/16 2 - 5/8 | 1 - 1/16 2 - 3/4 | 153    |               |
| 1 - 1/16              | 4 - 1/2    | 5 - 1/4 | 6/8        | 11/16 2 - 3/4 | 1 - 1/16 2 - 3/4 | 153    |               |
| 1 - 1/16              | 6 - 1/4    | 7       | 6/8        | 11/16 4 - 1/2 | 1 - 1/16 2 - 3/4 | 102    |               |
| 7/8                   | 4          | 4 - 3/4 | 6/8        | 9/16 2 - 1/4  | 7/8 2 - 3/4      | 189    |               |

## Door frames



## Customized sizes

We can manufacture most profiles and sizes of door frames used in each market around the world.



## Stiles and rails

We customize solutions to meet your specific needs.

### Thickness

29.5mm  
29.5mm  
28.6mm  
34.8mm  
33.7mm  
38.0mm

### Width

27.6mm  
33.0mm  
28.6mm  
45.0mm  
31.0mm  
35.0mm

Tolerance: + 0,2mm / -0,2mm | Length: square cut or PET

# Trim board and wall planks

---

S4S boards will bring a touch of class to your home. Its smooth surfaces and precision edges make the perfect board for exterior and interior trim.





Common applications include rake, fascia, corner boards, interior decorative trim, decorative wrap, baseboards and window trim. Millpar offers 21 different standard sizes in 16' lengths, and can accommodate other sizes on a special order basis.

**S4S boards**



| Net width | Standard sizes |        |        |
|-----------|----------------|--------|--------|
|           | Thickness      |        |        |
|           | 21/32"         | 23/32" | 1-1/8" |
| 1-1/2"    | 17,712         | 16,416 | 10,368 |
| 2-1/2"    | 10,496         | 9,728  | 6,144  |
| 3-1/2"    | 7,504          | 7,200  | 4,624  |
| 5-1/2"    | 4,784          | 4,560  | 2,829  |
| 7-1/4"    | 3,472          | 3,312  | 2,128  |
| 9-1/4"    | 2,704          | 2,656  | 1,696  |
| 11-1/4"   | 2,288          | 2,192  | 1,296  |

Lineal feet per unit

**T&G V-joint and Bead Boards**



Profiles are manufactured with shiplap, tangle & groove, V-joint and center bead. Their common applications include ceiling, wainscot paneling and walls.

| T&G Profiles           | Sizes          | Pieces/unit |  |
|------------------------|----------------|-------------|--|
| T&G wainscot Ref. 3125 | 21/32 X 3 1/4" | 384         |  |
| T&G wainscot Ref. 3126 | 21/32 X 5 1/4" | 224         |  |
| T&G wainscot Ref. 3575 | 23/32 X 5 1/2" | 288         |  |
| Shiplap Ref. 4556      | 9/16 X 5 1/4"  | 336         |  |
| Shiplap Ref. 4922      | 9/16 X 5 5/16" | 336         |  |
| Shiplap Ref. 4861      | 9/16 X 7 5/16" | 240         |  |

**Products available in:**

Raw Finger Jointed



Primed



# Stair parts, window & furniture components

---



Millpar is ready to supply stair parts, window and furniture components for manufacturers and home centers.

Produced with reforested pines, in the finger-jointed and edge glued systems which make the products free from defects and provides more stability to the pieces.



# Stair components

## Hand rails



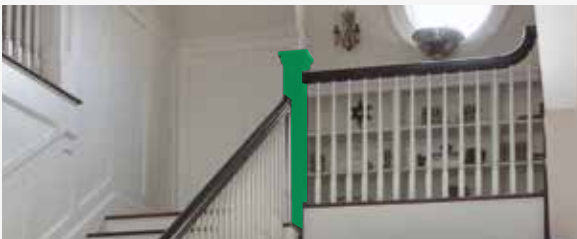
## Risers



## Treads



## Balusters and Posts

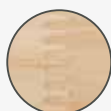


## Stringers

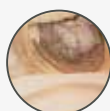


## Products available in:

Raw Finger  
Jointed



Knotty



Primed



# Window components

---

## Window extensions | Rabbeted stools



## Window scantlings



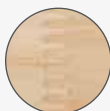
## Flat stools



Finishing options available according to products:

### Products available in:

Raw Finger  
Jointed



Primed



# Furniture components

---



Edge glued panels



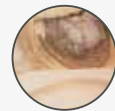
S4S and E4E



## Products available in:



Raw Finger Jointed



Knotty



Primed

# Edge glued panels

---

Edge glued panels are available in three different quality grades, customized packaging and specifications. Compare the characteristics of each grade to identify which panel attends your application needs.

## A GRADE QUALITY

Application: Stained Grade Furniture



## B GRADE QUALITY

Application: Stained Rustic Furniture



## C GRADE QUALITY

Application: Hobby boards for DIY stores, temporary applications, core for door and furniture.



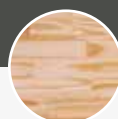
### OTHER SPECIFICATIONS:

Moisture content 8% to 14% • PVA Glue Type D4 • 150 Grit Sanding

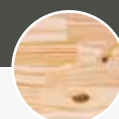
### TOLERANCES:

Thickness: +/- 0,5mm • Width: + 2mm, -0mm • Length: + 2mm, -0mm • Diagonal: +3mm, -0mm

# Finger-jointed edge glued panels



A GRADE QUALITY



B GRADE QUALITY



C GRADE QUALITY

## Allowed

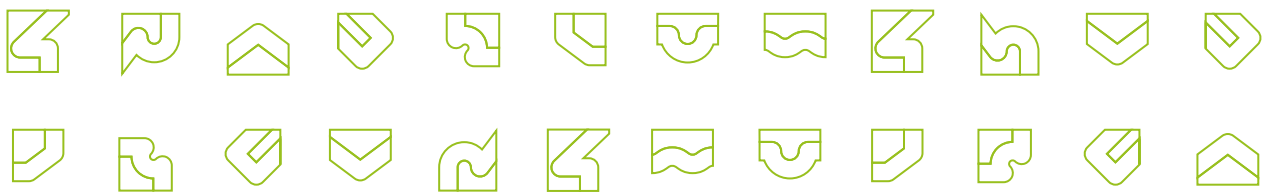
|                      | A GRADE  | B GRADE | C GRADE |
|----------------------|--|---------|---------|
| <b>Construction</b>  | Blocks length min 90mm   | ●       | ●       |
|                      | Blocks length average 500mm  |         | ●       |
|                      | Flat or vertical grain   | ●       | ●       |
|                      | Natural Colour variation   | ●       | ●       |
|                      | Maximum 3 wood pluggings on front side   | ●       | ●       |
|                      | Maximum 5 wood pluggings on back side 5% of the panels can be shipped in smaller lengths or widths (recover) | ●       | ●       |
|                      | Strips from 32 to 70mm   | ●       | ●       |
| <b>Knots</b>         | Knots of any size and any shape  |         | ●       |
|                      | Small patching on knots  |         | ●       |
|                      | Sound knots smaller than 55mm, average 1 knot per block  |         | ●       |
| <b>Other defects</b> | 10% of the panels can have small defects on back side (ex. small blue stain, light freckles)                 | ●       | ●       |
|                      | Heart Pith   |         | ●       |
|                      | Heart Pith on back side  |         | ●       |
|                      | Pitch  |         | ●       |
|                      | Resin Pockets  |         | ●       |
|                      | Bird's eyes/ Freckles  |         | ●       |
|                      | Small checks can be patched with glue and sawdust (max. 4mm x 10mm)  | ●       | ●       |
|                      | Blue stain   |         | ●       |

## Not allowed

|   | A GRADE | B GRADE | C GRADE |
|---|---------|---------|---------|
| Bird's eyes/Freckles                    | ●       |         |         |
| Blue stain                              | ●       | ●       |         |
| Checks                                  | ●       | ●       | ●       |
| Noticeble fillings                      | ●       | ●       | ●       |
| Open end splits                         | ●       | ●       | ●       |
| Open Joints                             | ●       | ●       | ●       |
| Loose knots, holes, decay, wane         | ●       | ●       | ●       |
| Heart Pith                              | ●       |         |         |
| Heart Pith on front side                | ●       | ●       |         |
| Pitch                                   | ●       | ●       |         |
| Pluggings closer to 25mm from the sides | ●       | ●       | ●       |
| Resin Pockets                           | ●       | ●       | ●       |

# millpar

moulding company



Av. Bento Munhoz da Rocha Neto, n° 5380  
Guarapuava, PR, 85050-150 - Brasil  
+55 42 3141 7800

[sales@millpar.com](mailto:sales@millpar.com)

[millpar.com](http://millpar.com)